

**dancoo**  
Quiet Simple Pods



**F FAMILY**

[dancoo.com](https://dancoo.com)

# F FAMILY

# dancoo F



## dancoo F

### Packaging and transportation

**Net weight (kg)**  
365

**Gross weight (kg)**  
457

**UNIT/20GP**  
12

**UNIT/40GP**  
24

**UNIT/40HQ**  
24

**Packaging size**  
2270 × 840 × 1145mm

### Feature

**Exterior**  
Powder coated steel

**Glass (door & rear)**  
Enamelled glass

**Frame and table**  
Enamelled glass attached+laminated on birch plywood

**Solid walls, roof and floor**  
A sandwich element of sheet metal, birch plywood, recycled acoustic foam and acoustic felt.  
An anti-static and stain resistant low loop pile carpet for interior floor.

**Weight**  
364.6

### Measurements

**Exterior (height, width, depth)**  
220 × 100 × 105cm

**Interior (height, width, depth)**  
200 × 80 × 101cm

**Door (height, width)**  
220 × 100cm

**Table (width, depth, height)**  
65 × 30 × 16cm

Electric sockets are integrated on the table

### Power consumption

#### Power consumption standard

3.24W while in use  
LED light :1.8W  
Fans in total: 1.44W

**0.75W standby power consumption or up on request**

#### Power consumption option

LED light: LED brightness adjustment options  
Fans in total: up to14.4W  
**Input:** 110-240VAC, 10A, 50/60Hz

### Outlets

#### Regular table:

Power socket + optional LAN cable (extra cost)

### Output values

**Output VAC (power socket):** 100–240 VAC, 8 A, 50–60 Hz

**Output USB charging:** USB Type A socket, Type C option,  
Maximum combined output 18 W

### Air Ventilation

#### Air Ventilation Ventilation rate:

More than 1m<sup>3</sup>/ minute standard

Adjustable higher ventilation options

### Acoustic performance

For speech level reduction (D<sub>s,a</sub>) and Noise isolation class (NIC),  
third party test reports are available per request

### Certificates



# F FAMILY

## dancoo 2F



### dancoo 2F

#### Packaging and transportation

**Net weight (kg)**  
620

**Gross weight (kg)**  
723

**UNIT/20GP**  
6

**UNIT/40GP**  
12

**UNIT/40HQ**  
14

**Packaging size**  
2270 × 930 × 1330mm  
+900 × 900 × 1100mm

#### Feature

**Exterior**  
Powder coated steel

**Glass (door & rear)**  
Enamelled glass

**Frame and table**  
Enamelled glass attached+laminate on birch plywood

**Solid walls, roof and floor**  
A sandwich element of sheet metal, birch plywood, recycled acoustic foam and acoustic felt.  
An anti-static and stain resistant low loop pile carpet for interior floor.

**Weight**  
620.3

#### Measurements

**Exterior (height, width, depth)**  
220 × 200 × 125cm

**Interior (height, width, depth)**  
200 × 180 × 122cm

**Door (height, width)**  
220 × 100cm

**Table (width, depth, height)**  
70 × 38 × 64cm

#### Power consumption

##### Power consumption standard

6.48W while in use  
LED light :3.6W  
Fans in total: 2.88W

##### 0.75W standby power consumption or up on request

##### Power consumption option

ED light: LED brightness adjustment options  
Fans in total: up to 28.8W  
**Input:** 110-240VAC, 10A, 50/60Hz

#### Outlets

**Regular sofa:**  
Power socket + optional LAN cable (extra cost)

#### Output values

**Output VAC (power socket):** 100–240 VAC, 8 A, 50–60 Hz

**Output USB charging:** USB Type A socket, Type C option,  
Maximum combined output 18 W

#### Air Ventilation

**Air Ventilation Ventilation rate:**  
More than 2m<sup>3</sup>/ minute standard  
Adjustable higher ventilation options

#### Acoustic performance

For speech level reduction (D<sub>s,A</sub>) and Noise isolation class (NIC),  
third party test reports are available per request

#### Certificates



• Specifications are subject to change without notice.

# F FAMILY

## dancoo 2F2



### dancoo 2F2

#### Packaging and transportation

**Net weight (kg)**  
624

**Gross weight (kg)**  
727

**UNIT/20GP**  
4

**UNIT/40GP**  
9

**UNIT/40HQ**  
13

**Packaging size**  
2270 × 1210 × 1330mm  
+900 × 900 × 1100mm

#### Feature

**Exterior**  
Powder coated steel

**Glass (door & rear)**  
Enamelled glass

**Frame and table**  
Enamelled glass attached+laminated on birch plywood

**Solid walls, roof and floor**  
A sandwich element of sheet metal, birch plywood, recycled acoustic foam and acoustic felt.  
An anti-static and stain resistant low loop pile carpet for interior floor.

**Weight**  
623.6

#### Measurements

**Exterior (height, width, depth)**  
220 × 220 × 123.6cm

**Interior (height, width, depth)**  
200 × 200 × 120cm

**Door (height, width)**  
220 × 84.6cm

**Table (width, depth, height)**  
70 × 53 × 64cm

#### Power consumption

##### Power consumption standard

6.48W while in use  
LED light :3.6W  
Fans in total: 2.88W

**0.75W standby power consumption or up on request**

##### Power consumption option

ED light: LED brightness adjustment options  
Fans in total: up to 28.8W  
**Input:** 110-240VAC, 10A, 50/60Hz

#### Outlets

**Regular sofa:**  
Power socket + optional LAN cable (extra cost)

#### Output values

**Output VAC (power socket):** 100–240 VAC, 8 A, 50–60 Hz

**Output USB charging:** USB Type A socket, Type C option,  
Maximum combined output 18 W

#### Air Ventilation

**Air Ventilation Ventilation rate:**  
More than 2m<sup>3</sup>/ minute standard  
Adjustable higher ventilation options

#### Acoustic performance

For speech level reduction (D<sub>s,A</sub>) and Noise isolation class (NIC),  
third party test reports are available per request

#### Certificates



• Specifications are subject to change without notice.

[dancoo.com](http://dancoo.com)

# F FAMILY

## dancoo 4F2



### dancoo 4F2

#### Packaging and transportatinon

**Net weight (kg)**  
1110

**Gross weight (kg)**  
1280

**UNIT/20GP**  
2

**UNIT/40GP**  
8

**UNIT/40HQ**  
8

**Packaging size**  
2470 × 1000 × 1350mm × 2

#### Feature

**Exterior**  
Powder coated steel

**Glass (door & rear)**  
Enamelled glass

**Frame**  
Enamelled glass attached

**Solid walls, roof and floor**  
A sandwich element of sheet metal, birch plywood, recycled acoustic foam and acoustic felt.  
An anti-static and stain resistant low loop pile carpet for interior floor.

**Weight**  
1100

#### Measurements

**Exterior (height, width, depth)**  
220 × 220 × 243.6cm

**Interior (height, width, depth)**  
200 × 200 × 237.2cm

**Door (height, width)**  
220 × 84.6cm

**Table (width, depth, height)**  
/

#### Power consumption

##### Power consumption standard

12.96W while in use  
LED light :7.2W  
Fans in total: 5.76W

##### 0.75W standby power consumption or up on request

##### Power consumption option

ED light: LED brightness adjustment options  
Fans in total: up to 57.6W  
**Input:** 110-240VAC, 10A, 50/60Hz

#### Outlets

**Regular wall or floor:**  
Power socket + optional LAN cable (extra cost)

#### Output values

**Output VAC (power socket):** 100–240 VAC, 8 A, 50–60 Hz

**Output USB charging:** USB Type A socket, Type C option,  
Maximum combined output 18 W

#### Air Ventilation

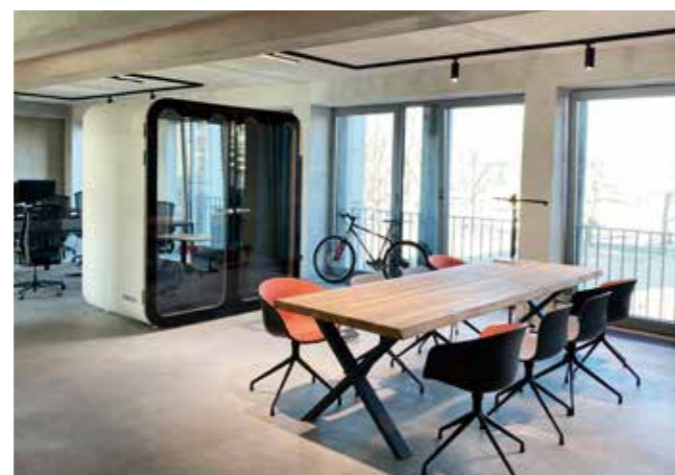
**Air Ventilation Ventilation rate:**  
More than 4m<sup>3</sup>/ minute standard  
Adjustable higher ventilation options

#### Acoustic performance

For speech level reduction (D<sub>s,A</sub>) and Noise isolation class (NIC),  
third party test reports are available per request

#### Certificates





# F FAMILY

# dancoo F / 2F / 2F2 / 4F2

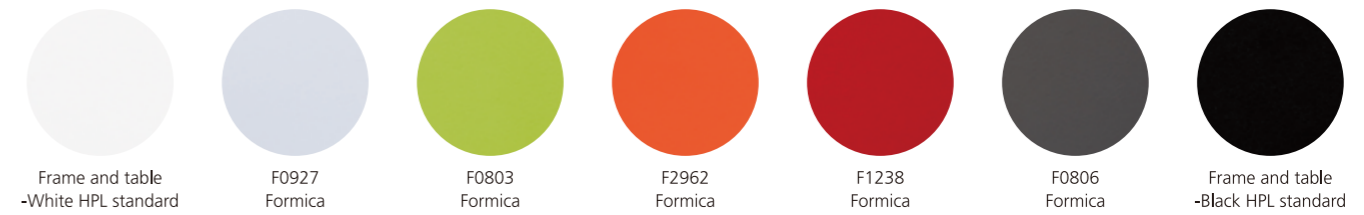
## Color options - Dancoo standard color



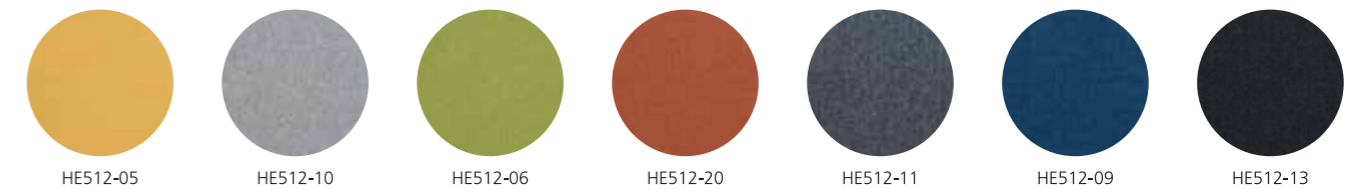
## Color options - Exterior color options



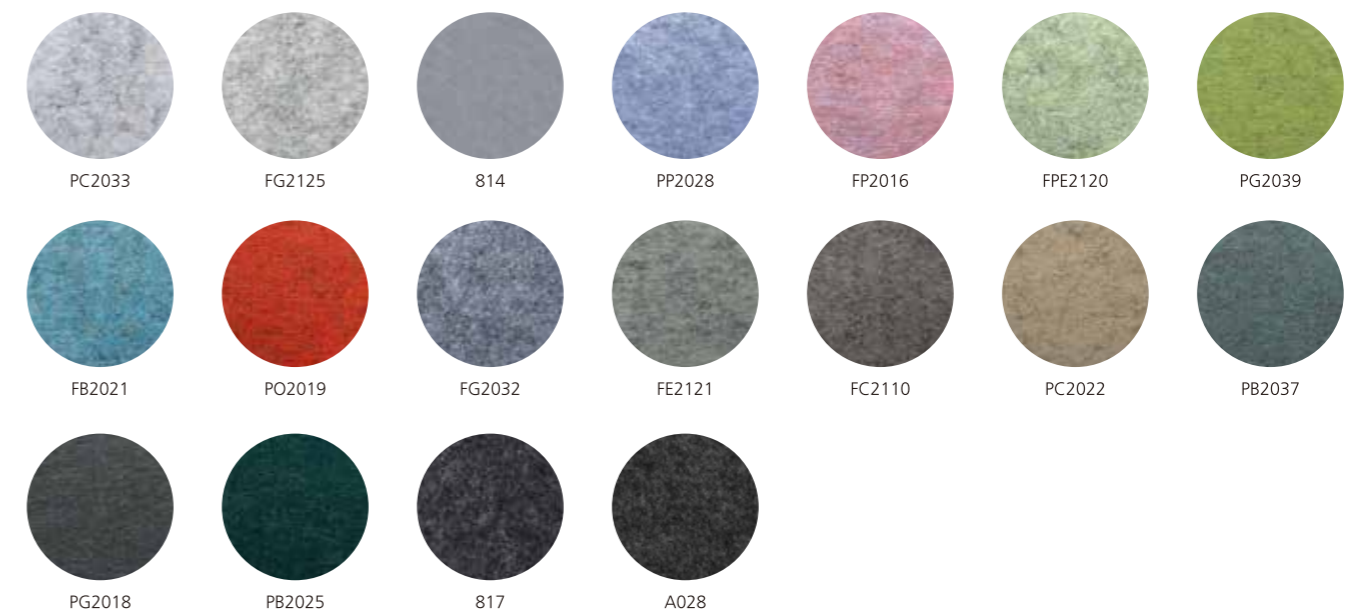
## Color options - Frame and table



## Color options - Sofa Upholstery



## Color options - Interior - PET acoustic felt



• The color number starting with F meets the requirements for the flame spread index and smoke developed index of class A Interior walls and ceilings finish category in accordance with ASTM E84-2021a

# dancoo

Quiet Simple Pods

In our noisy and complex world  
Quiet and simple is rare and appreciated  
Quiet and simple is closer to truth

**Quiet Simple Pods for Quiet Office**

**[dancoo.com](https://dancoo.com)**